



FLOOR --- PLANS

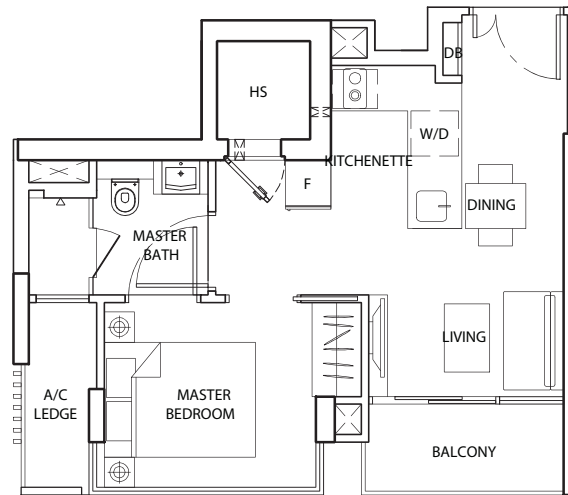
1 BEDROOM

Type A

39 sq m / 420 sq ft

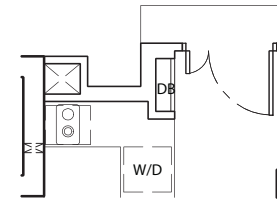
#05-01 to #17-01

#05-08* to #17-08*



40 sq m / 431 sq ft

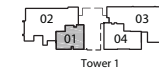
#02-01 to #03-01



39 sq m / 420 sq ft

#19-01

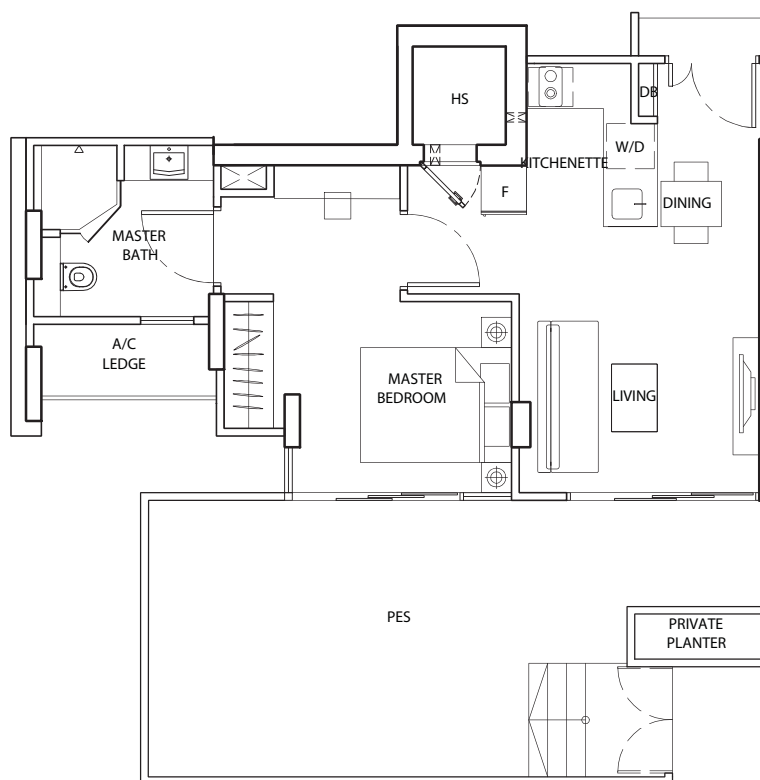
#19-08*



Type AG

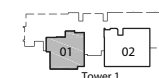
77 sq m / 829 sq ft

#01-01



* The unit is mirrored

Areas include A/C ledge, balcony, PES, roof terrace and void. Orientations and facings will differ depending on the unit you are purchasing. Please refer to the key plan. Plans are not drawn to scale and subject to change as may be required or approved by the relevant authorities. All floor areas are estimates and are subject to final survey.



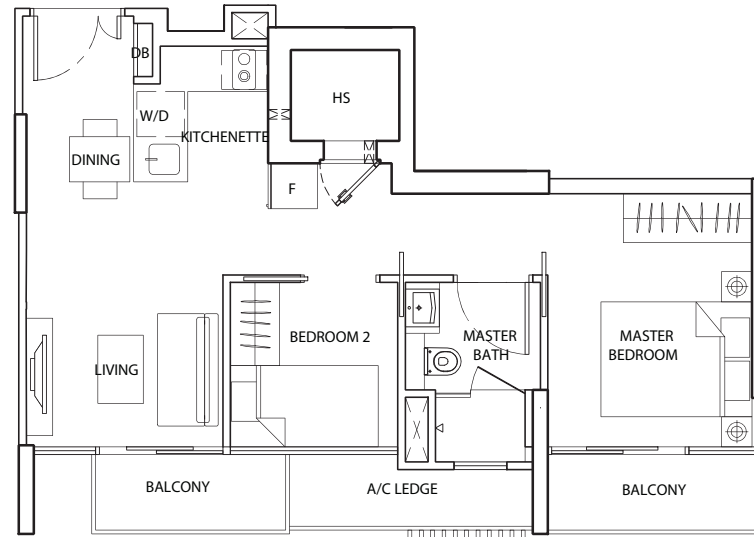
(1st Storey)



2 BEDROOM

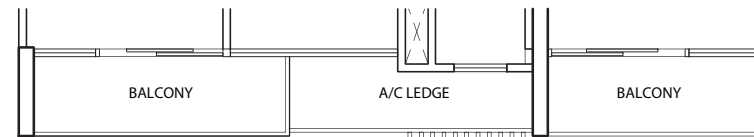
Type B

54 sq m / 581 sq ft



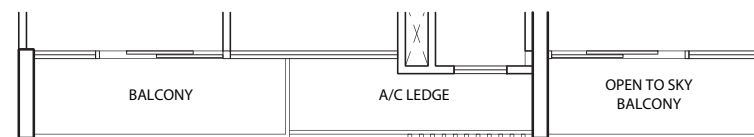
#02-03
 #06-04
 #08-04
 #10-04
 #12-04
 #14-04
 #16-04
 #18-03

55 sq m / 592 sq ft

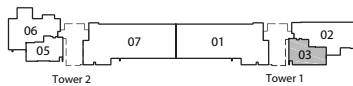


#03-03
 #05-04
 #07-04
 #09-04
 #11-04
 #13-04
 #15-04
 #17-04

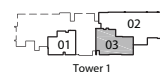
55 sq m / 592 sq ft



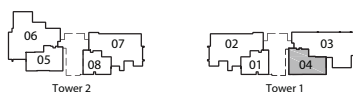
#19-04



(18th Storey)



(2nd ~ 3rd Storey)



Areas include A/C ledge, balcony, PES, roof terrace and void. Orientations and facings will differ depending on the unit you are purchasing. Please refer to the key plan. Plans are not drawn to scale and subject to change as may be required or approved by the relevant authorities. All floor areas are estimates and are subject to final survey.

2 BEDROOM

Type B1

53 sq m / 570 sq ft

#06-05

#08-05

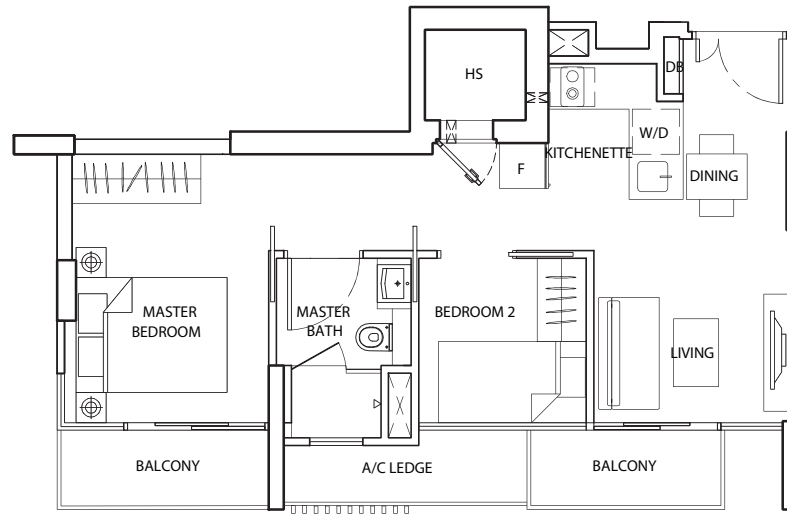
#10-05

#12-05

#14-05

#16-05

#18-05



54 sq m / 581 sq ft

#05-05

#07-05

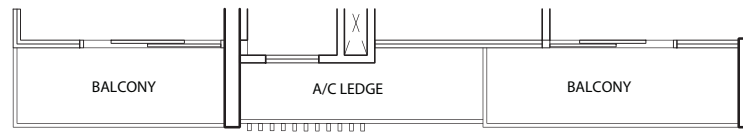
#09-05

#11-05

#13-05

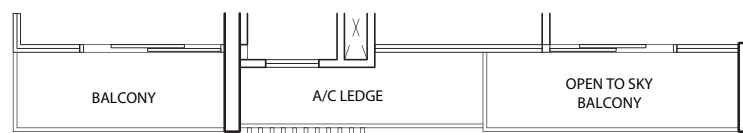
#15-05

#17-05

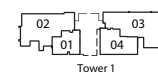


54 sq m / 581 sq ft

#19-05



Areas include A/C ledge, balcony, PES, roof terrace and void. Orientations and facings will differ depending on the unit you are purchasing. Please refer to the key plan. Plans are not drawn to scale and subject to change as may be required or approved by the relevant authorities. All floor areas are estimates and are subject to final survey.

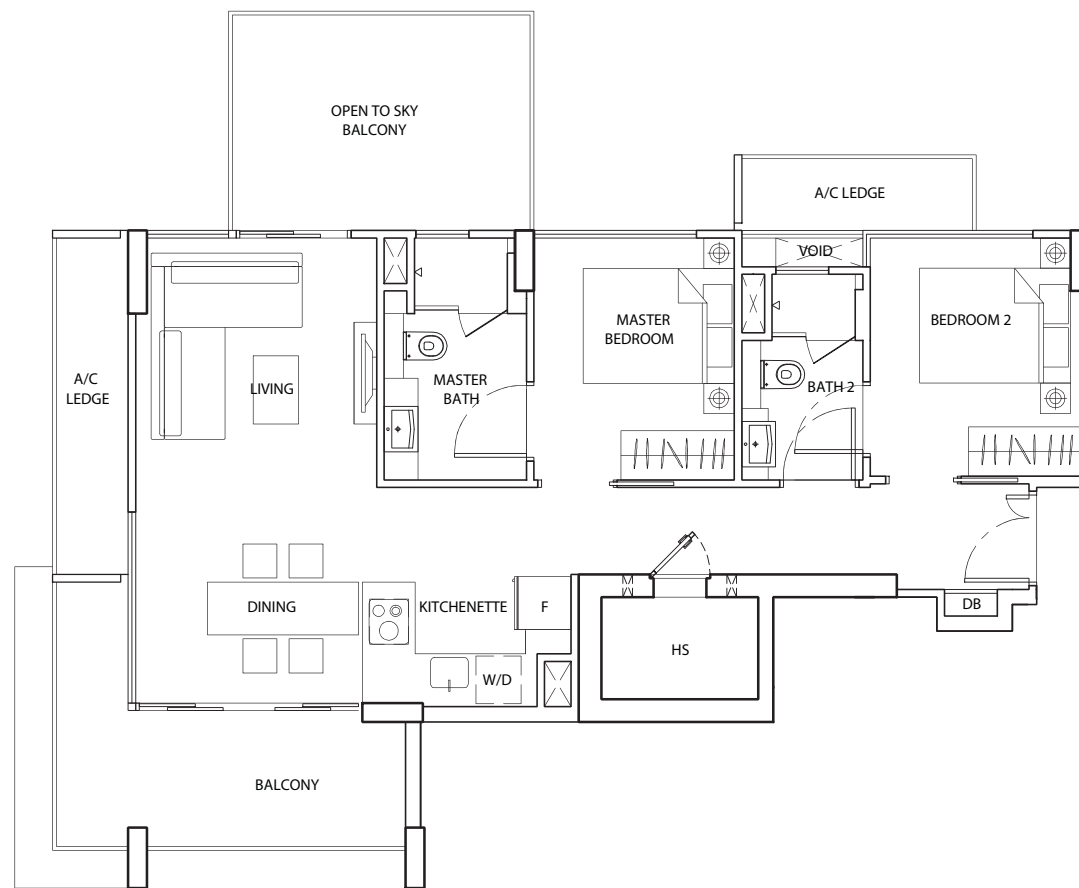


2 BEDROOM

Type B2

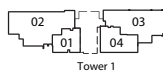
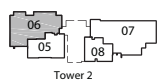
101 sq m / 1087 sq ft

#18-06



97 sq m / 1044 sq ft

#19-06



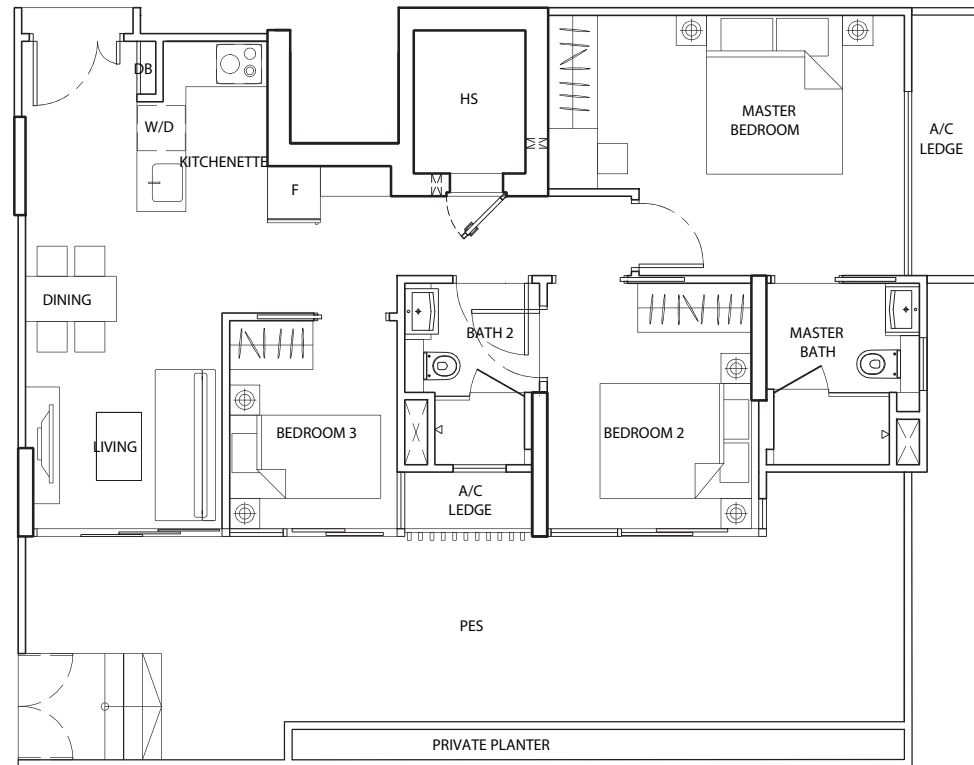
Areas include A/C ledge, balcony, PES, roof terrace and void. Orientations and facings will differ depending on the unit you are purchasing. Please refer to the key plan. Plans are not drawn to scale and subject to change as may be required or approved by the relevant authorities. All floor areas are estimates and are subject to final survey.

3 BEDROOM

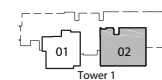
Type CG

117 sq m / 1259 sq ft

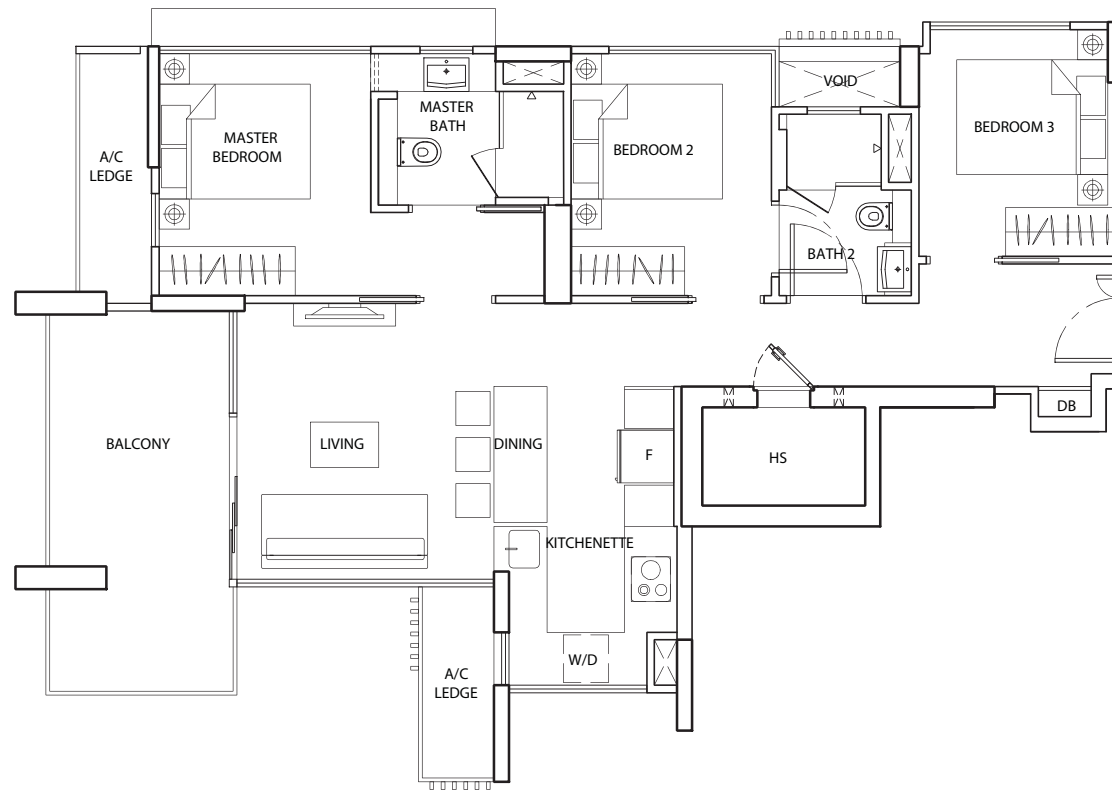
#01-02



Areas include A/C ledge, balcony, PES, roof terrace and void. Orientations and facings will differ depending on the unit you are purchasing. Please refer to the key plan. Plans are not drawn to scale and subject to change as may be required or approved by the relevant authorities. All floor areas are estimates and are subject to final survey.



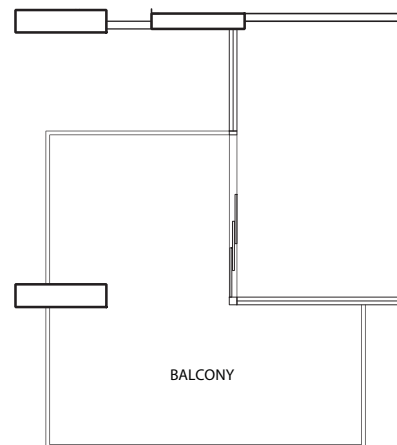
3 BEDROOM



Type C

98 sq m / 1055 sq ft

#05-02
 #07-02
 #09-02
 #11-02
 #13-02
 #15-02
 #05-07*
 #07-07*
 #09-07*
 #11-07*
 #13-07*
 #15-07*



99 sq m / 1066 sq ft

#06-02
 #08-02
 #10-02
 #12-02
 #14-02
 #16-02
 #06-07*
 #08-07*
 #10-07*
 #12-07*
 #14-07*
 #16-07*



Tower 2



Tower 1



* The unit is mirrored

Areas include A/C ledge, balcony, PES, roof terrace and void. Orientations and facings will differ depending on the unit you are purchasing. Please refer to the key plan. Plans are not drawn to scale and subject to change as may be required or approved by the relevant authorities. All floor areas are estimates and are subject to final survey.

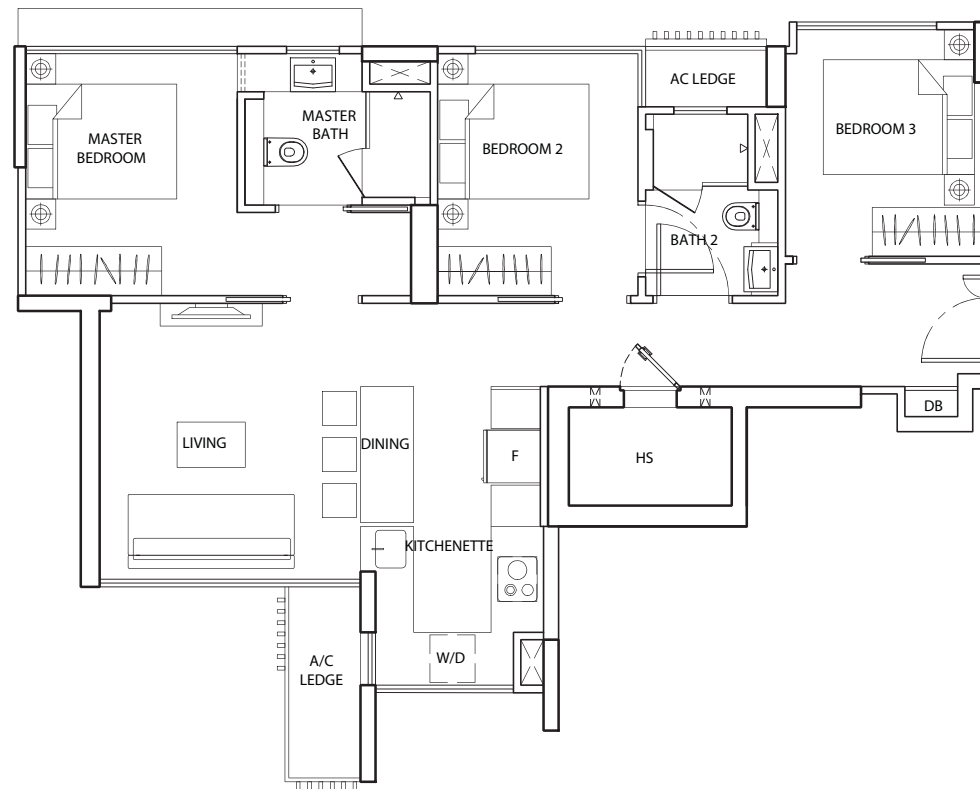
3 BEDROOM

Type C-a

83 sq m / 893 sq ft

#17-02

#17-07*

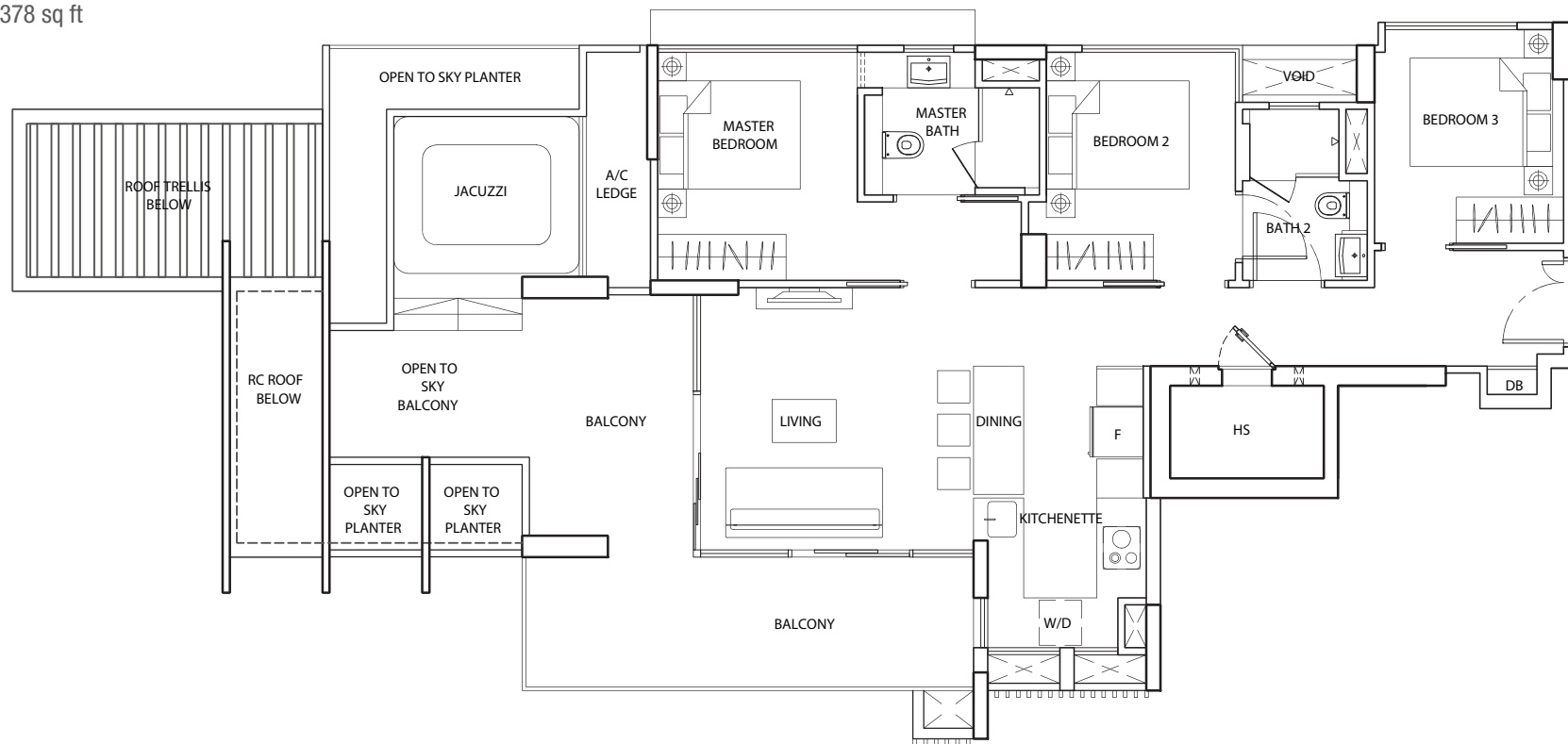


Type C-b

128 sq m / 1378 sq ft

#19-02

#19-07*

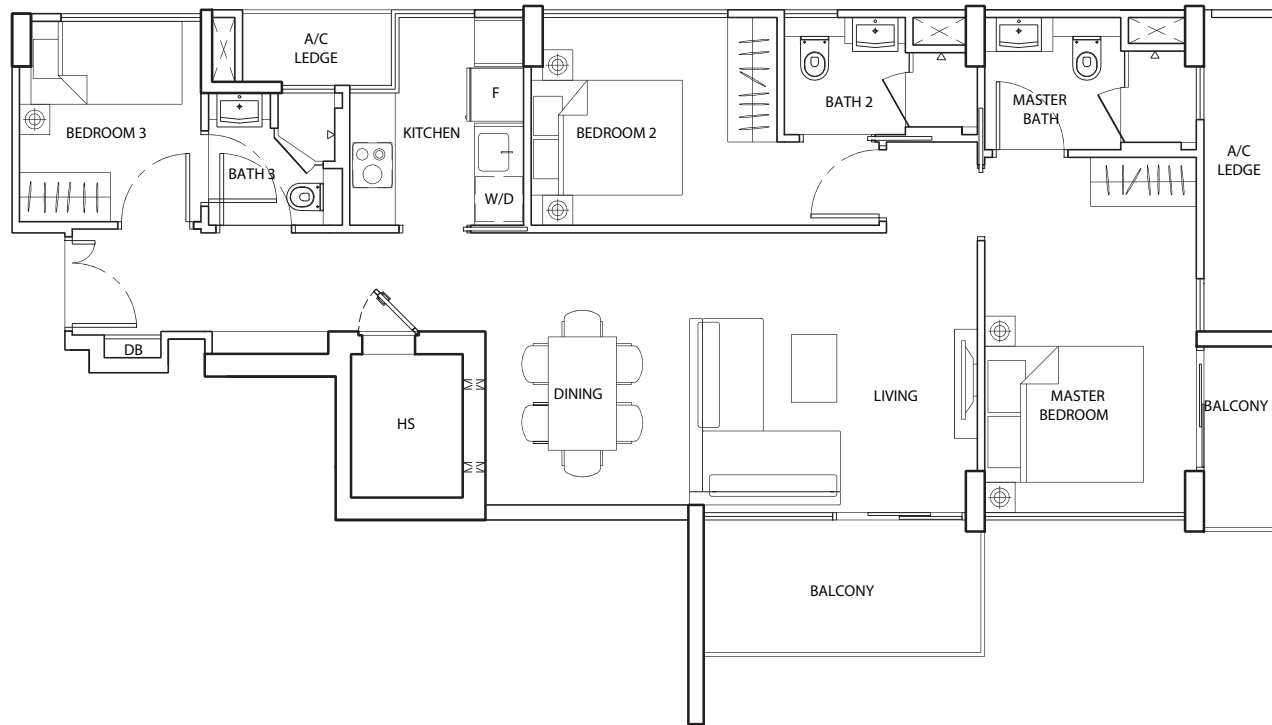


* The unit is mirrored

Areas include A/C ledge, balcony, PES, roof terrace and void. Orientations and facings will differ depending on the unit you are purchasing. Please refer to the key plan. Plans are not drawn to scale and subject to change as may be required or approved by the relevant authorities. All floor areas are estimates and are subject to final survey.

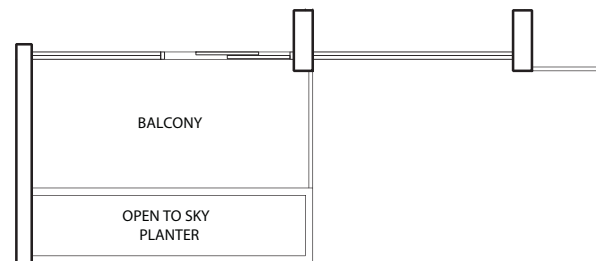


3 BEDROOM



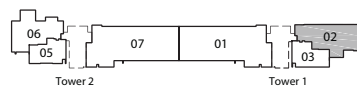
Type C1
107 sq m / 1152 sq ft

#06-03
#08-03
#10-03
#12-03
#14-03
#16-03
#18-02



110 sq m / 1184 sq ft

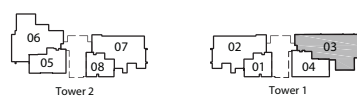
#02-02



(18th Storey)



(2nd Storey)



Areas include A/C ledge, balcony, PES, roof terrace and void. Orientations and facings will differ depending on the unit you are purchasing. Please refer to the key plan. Plans are not drawn to scale and subject to change as may be required or approved by the relevant authorities. All floor areas are estimates and are subject to final survey.

3 BEDROOM

Type C1

113 sq m / 1216 sq ft

#03-02

#05-03

#07-03

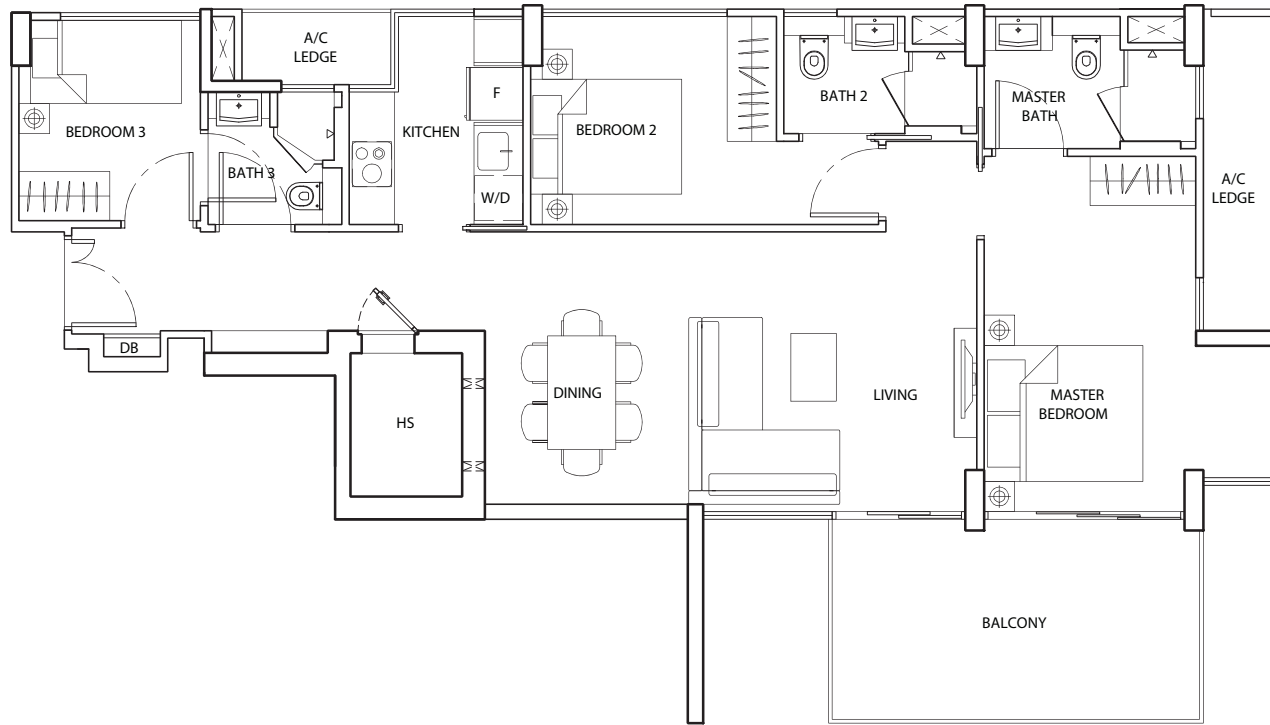
#09-03

#11-03

#13-03

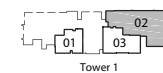
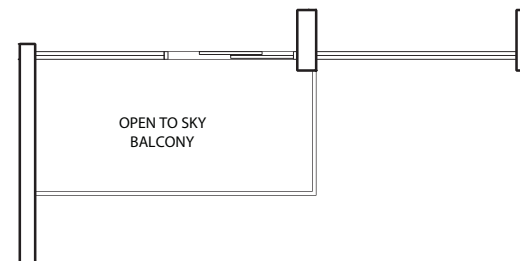
#15-03

#17-03



106 sq m / 1141 sq ft

#19-03

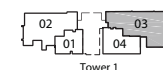


Tower 1

(3rd Storey)



Tower 2



Tower 1

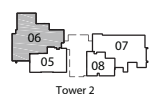
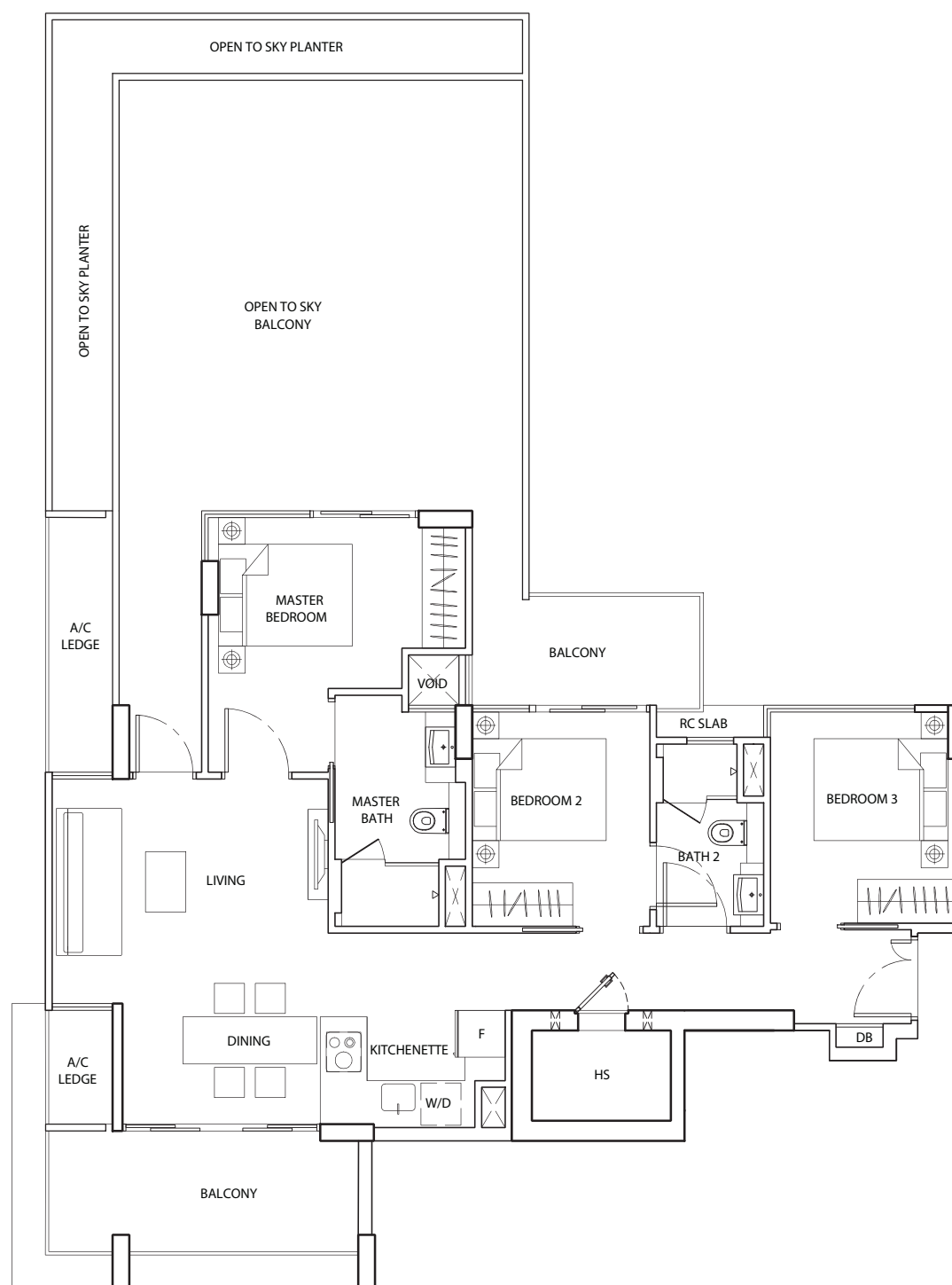


Areas include A/C ledge, balcony, PES, roof terrace and void. Orientations and facings will differ depending on the unit you are purchasing. Please refer to the key plan. Plans are not drawn to scale and subject to change as may be required or approved by the relevant authorities. All floor areas are estimates and are subject to final survey.

3 BEDROOM

Type C2-a
164 sq m / 1765 sq ft

#05-06



Tower 2



Tower 1



Areas include A/C ledge, balcony, PES, roof terrace and void. Orientations and facings will differ depending on the unit you are purchasing. Please refer to the key plan. Plans are not drawn to scale and subject to change as may be required or approved by the relevant authorities. All floor areas are estimates and are subject to final survey.

3 BEDROOM

Type C2

110 sq m / 1184 sq ft

#06-06

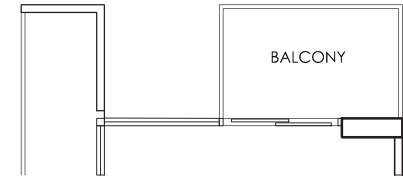
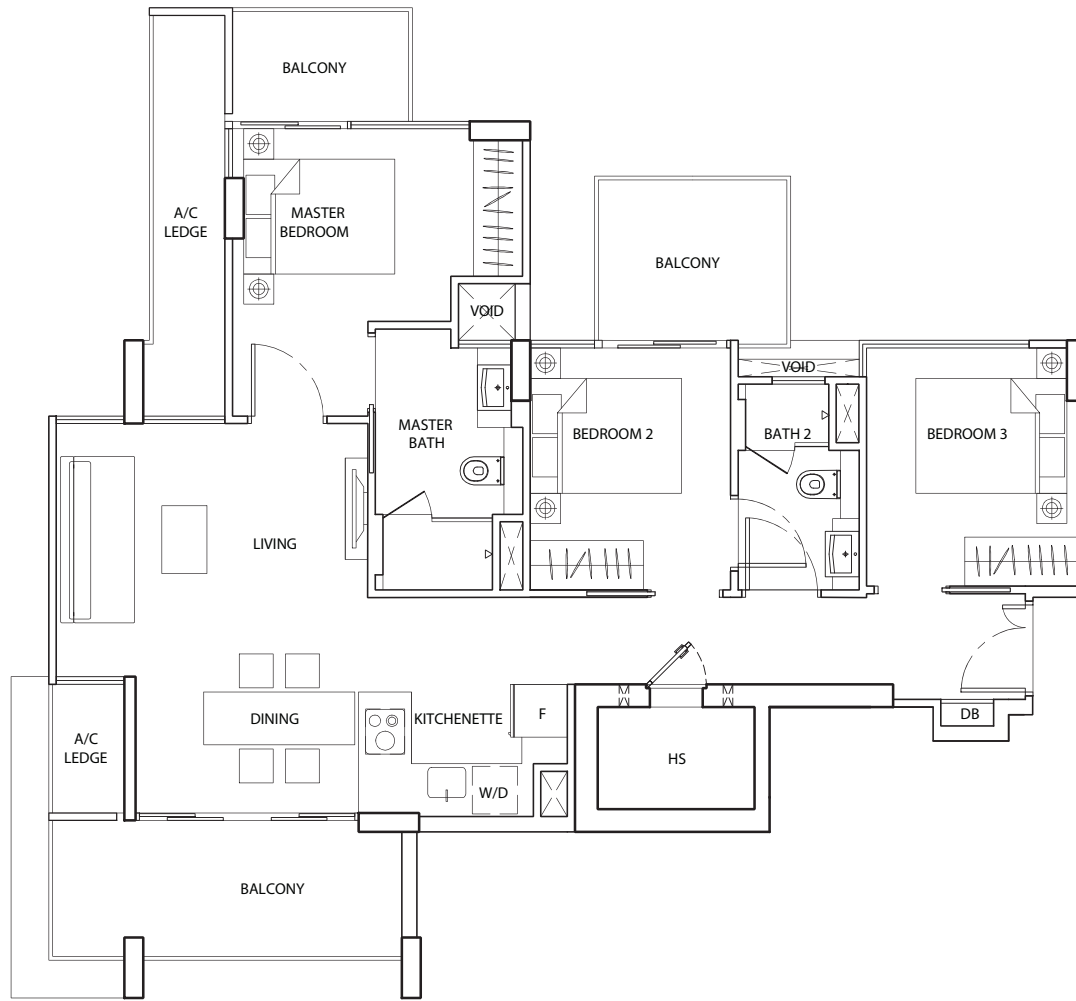
#08-06

#10-06

#12-06

#14-06

#16-06



110 sq m / 1184 sq ft

#07-06

#09-06

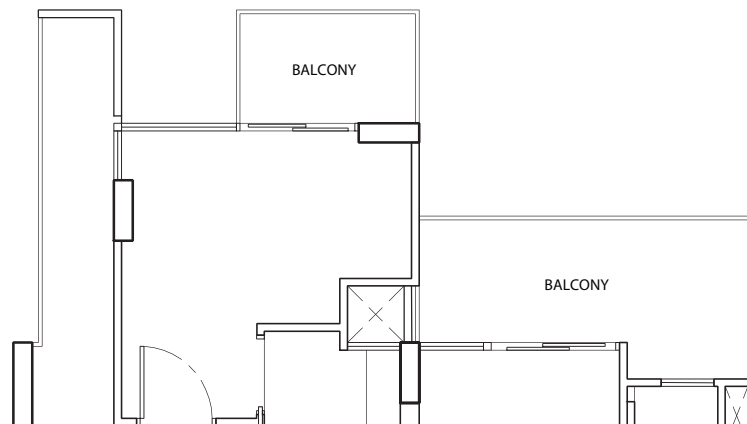
#11-06

#13-06

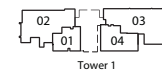
#15-06

112 sq m / 1206 sq ft

#17-06



Areas include A/C ledge, balcony, PES, roof terrace and void. Orientations and facings will differ depending on the unit you are purchasing. Please refer to the key plan. Plans are not drawn to scale and subject to change as may be required or approved by the relevant authorities. All floor areas are estimates and are subject to final survey.



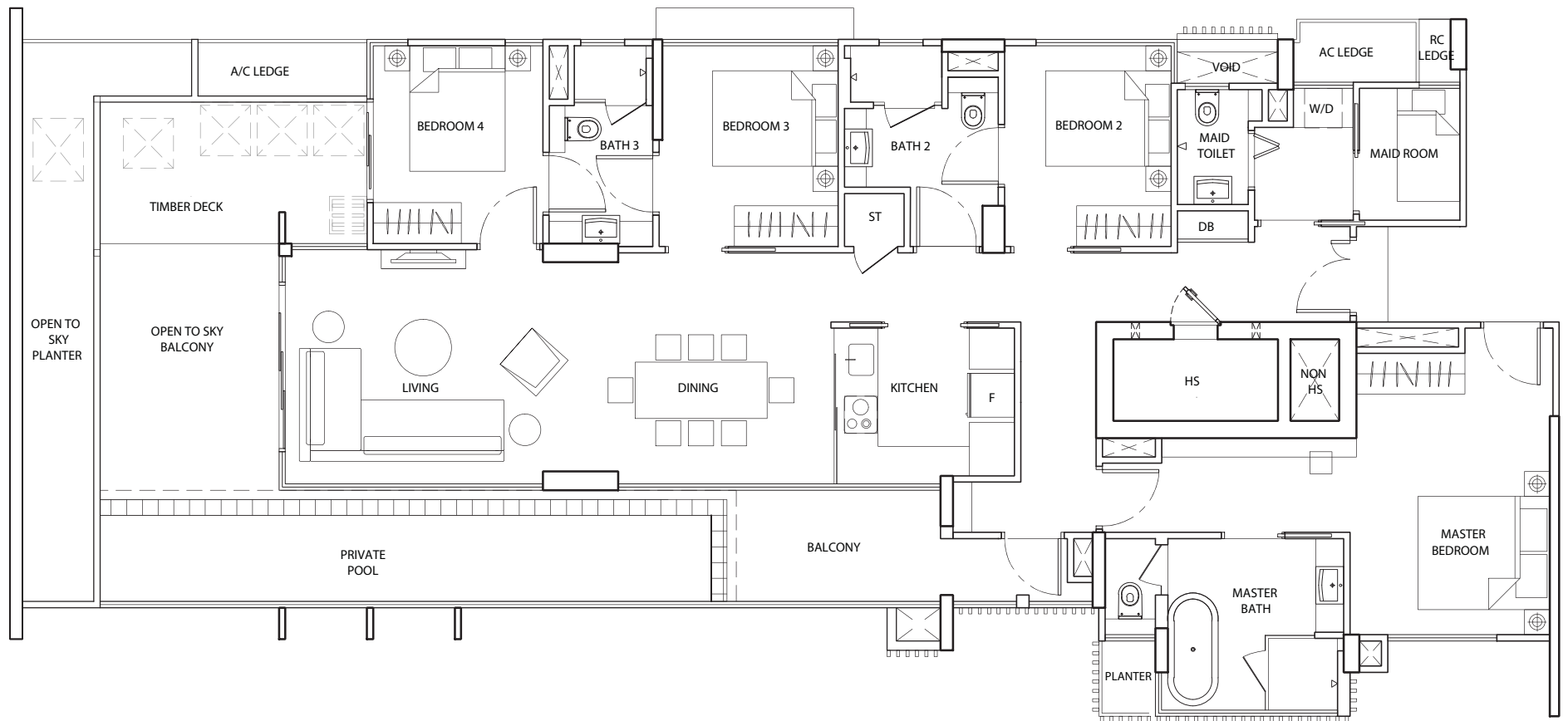
4 BEDROOM

Type SA

216 sq m / 2325 sq ft

#18-01

#18-07*

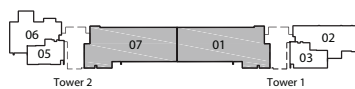


* The unit is mirrored

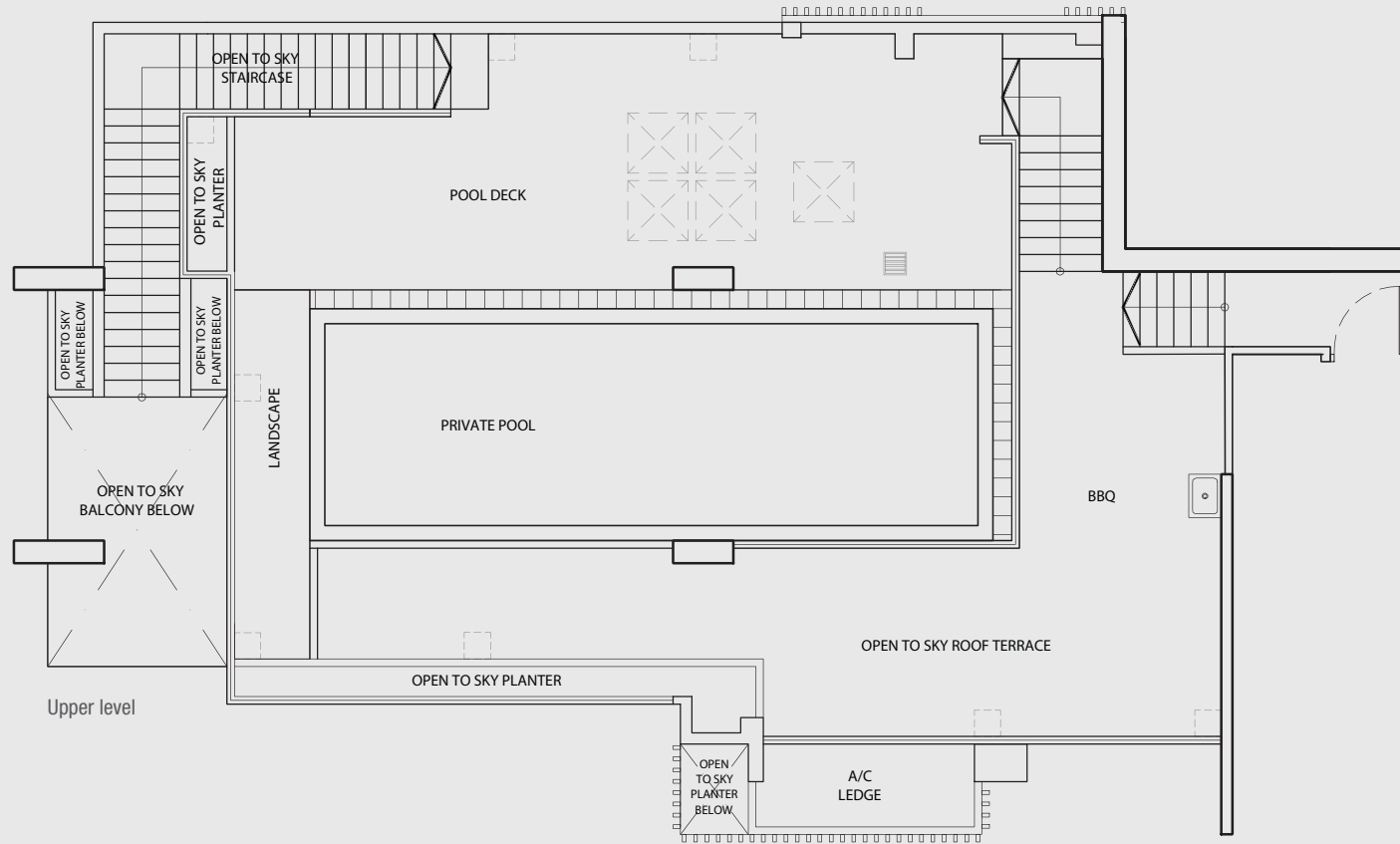
Areas include A/C ledge, balcony, PES, roof terrace and void. Orientations and facings will differ depending on the unit you are purchasing. Please refer to the key plan. Plans are not drawn to scale and subject to change as may be required or approved by the relevant authorities. All floor areas are estimates and are subject to final survey.



To allow accessibility of maintenance personnel when required.



PENTHOUSE • 3 BEDROOM



Type PH1

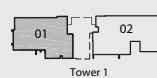
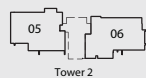
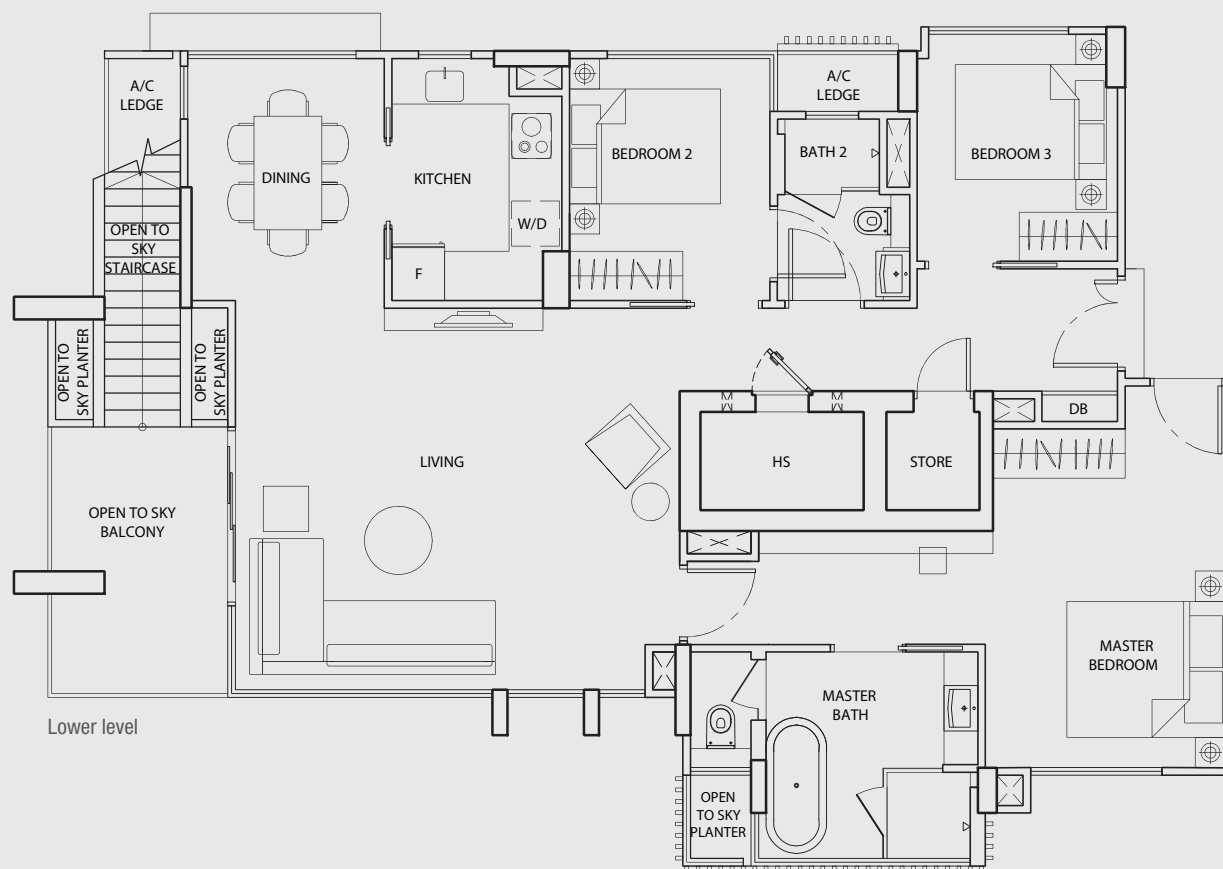
Total Area -

267 sq m / 2874 sq ft

133 sq m / 1432 sq ft
(Upper Level)

134 sq m / 1442 sq ft
(Lower Level)

#20-01



Areas include A/C ledge, balcony, PES, roof terrace and void. Orientations and facings will differ depending on the unit you are purchasing. Please refer to the key plan. Plans are not drawn to scale and subject to change as may be required or approved by the relevant authorities. All floor areas are estimates and are subject to final survey.



To allow accessibility of maintenance personnel when required.

PENTHOUSE • 3 BEDROOM

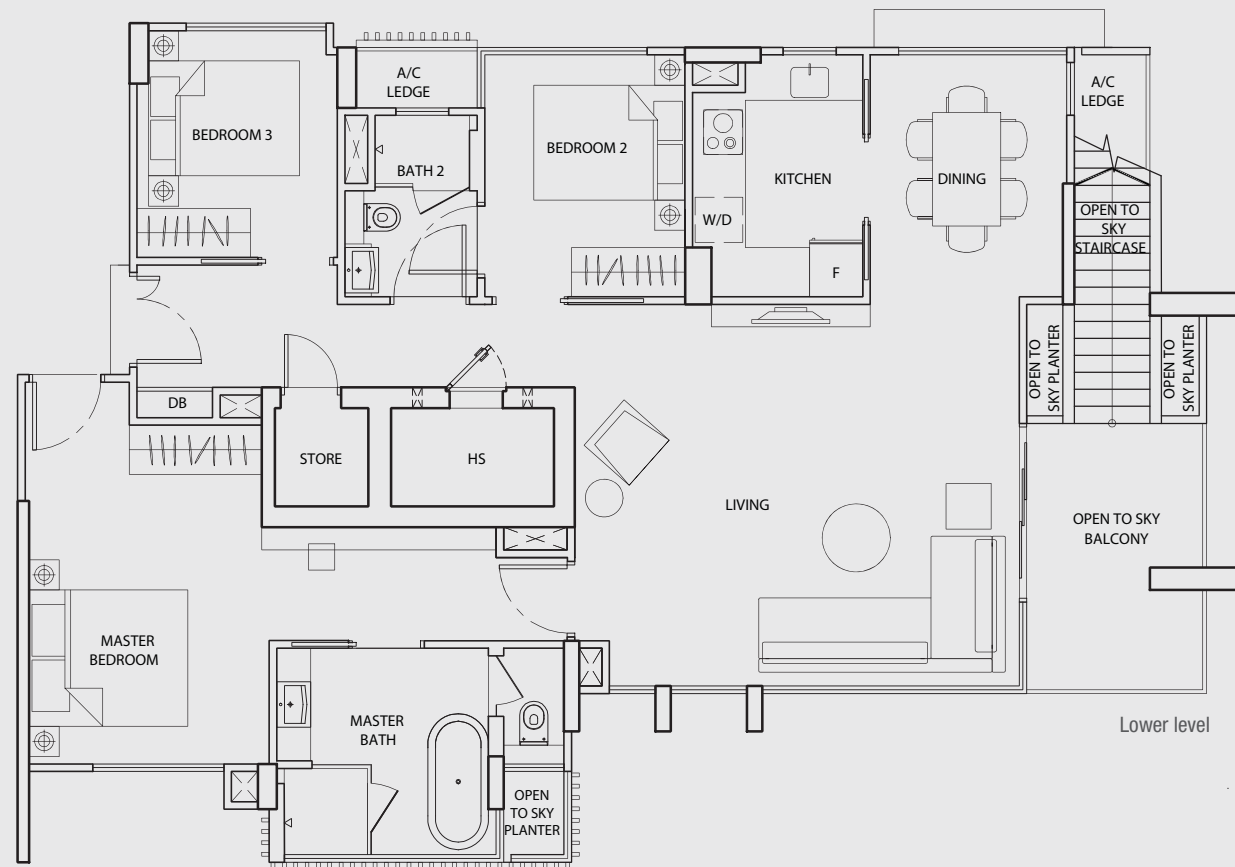
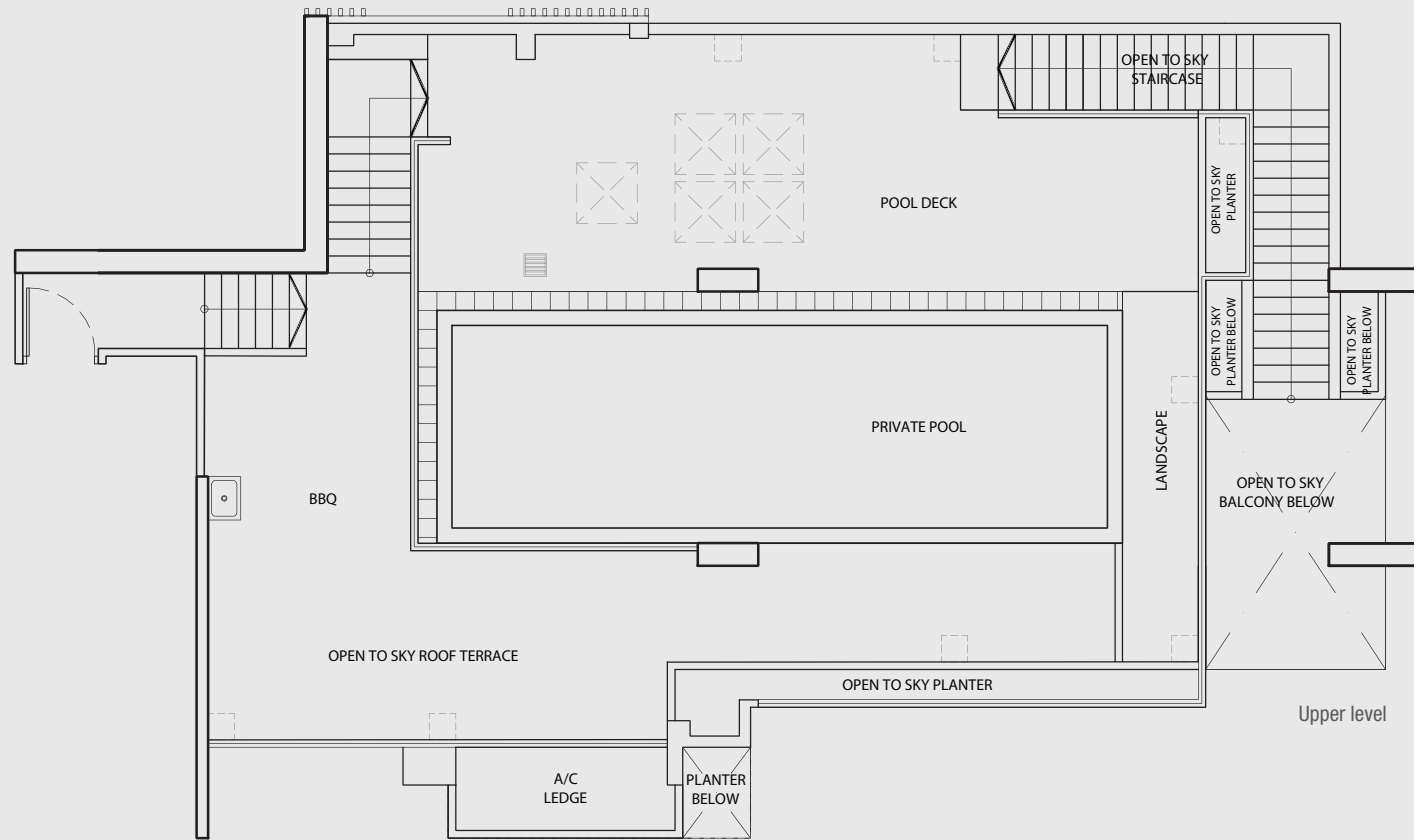
Type PH2

Total Area -
267 sq m / 2874 sq ft


133 sq m / 1432 sq ft
(Upper Level)

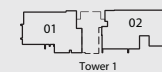
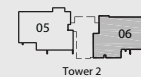
134 sq m / 1442 sq ft
(Lower Level)

#20-06



Areas include A/C ledge, balcony, PES, roof terrace and void. Orientations and facings will differ depending on the unit you are purchasing. Please refer to the key plan. Plans are not drawn to scale and subject to change as may be required or approved by the relevant authorities. All floor areas are estimates and are subject to final survey.

 To allow accessibility of maintenance personnel when required.



PENTHOUSE • 3+1 BEDROOM

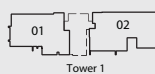
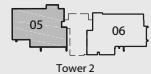
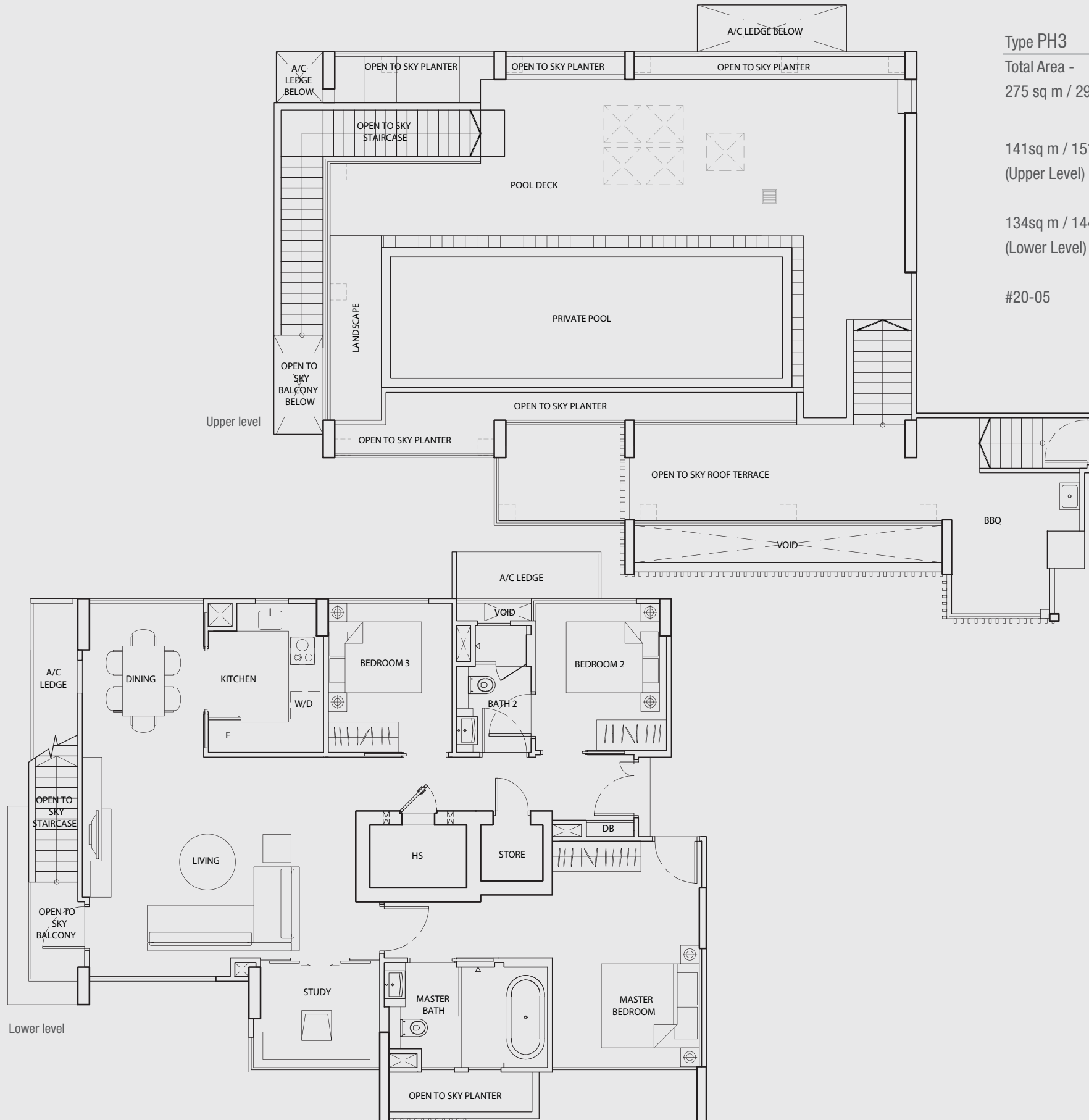
Type PH3

Total Area -
275 sq m / 2960 sq ft

141sq m / 1518 sq ft
(Upper Level)

134sq m / 1442 sq ft
(Lower Level)

#20-05



Areas include A/C ledge, balcony, PES, roof terrace and void. Orientations and facings will differ depending on the unit you are purchasing. Please refer to the key plan. Plans are not drawn to scale and subject to change as may be required or approved by the relevant authorities. All floor areas are estimates and are subject to final survey.

To allow accessibility of maintenance personnel when required.

PENTHOUSE • 4+1 BEDROOM

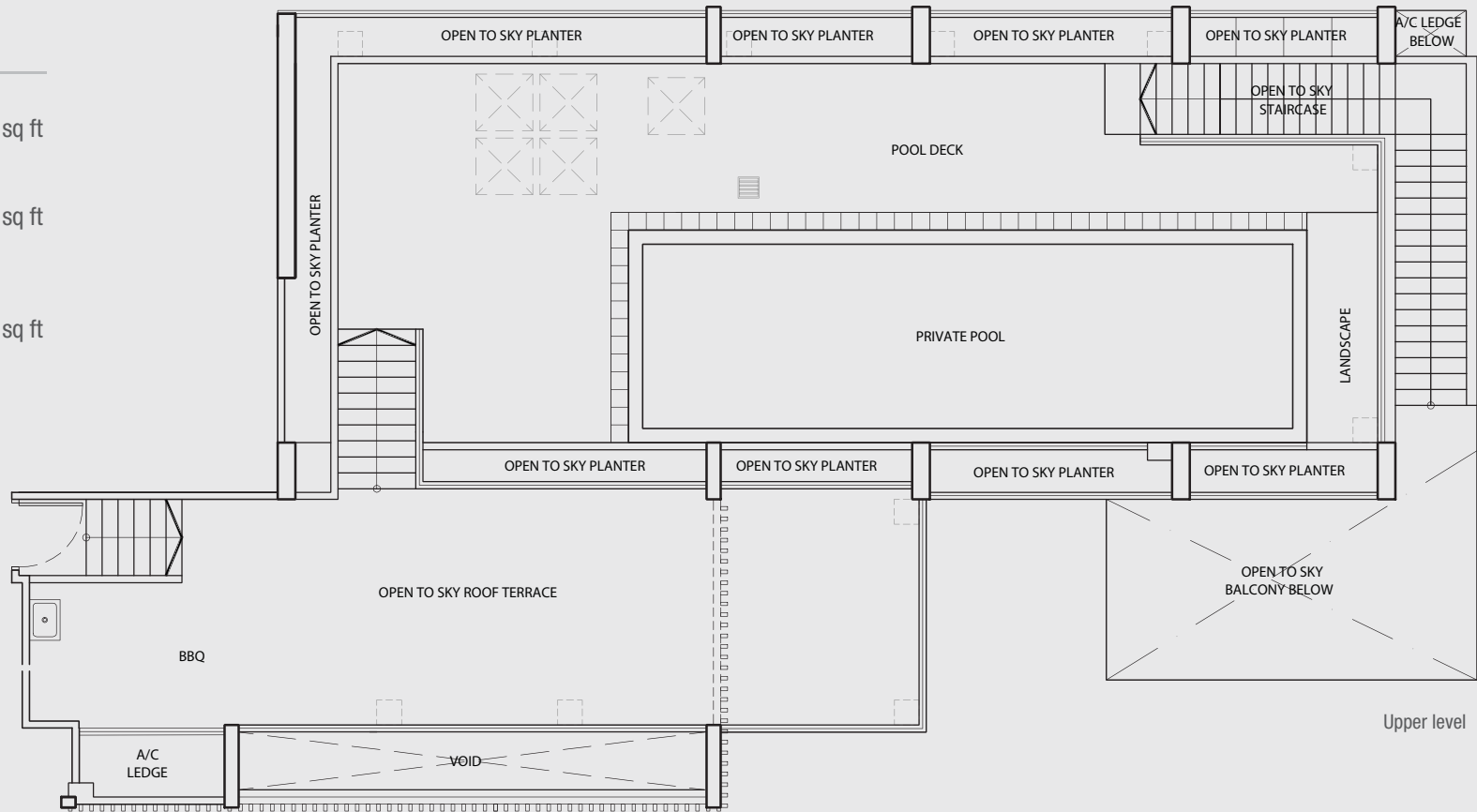
Type PH4

Total Area -
318 sq m / 3423 sq ft

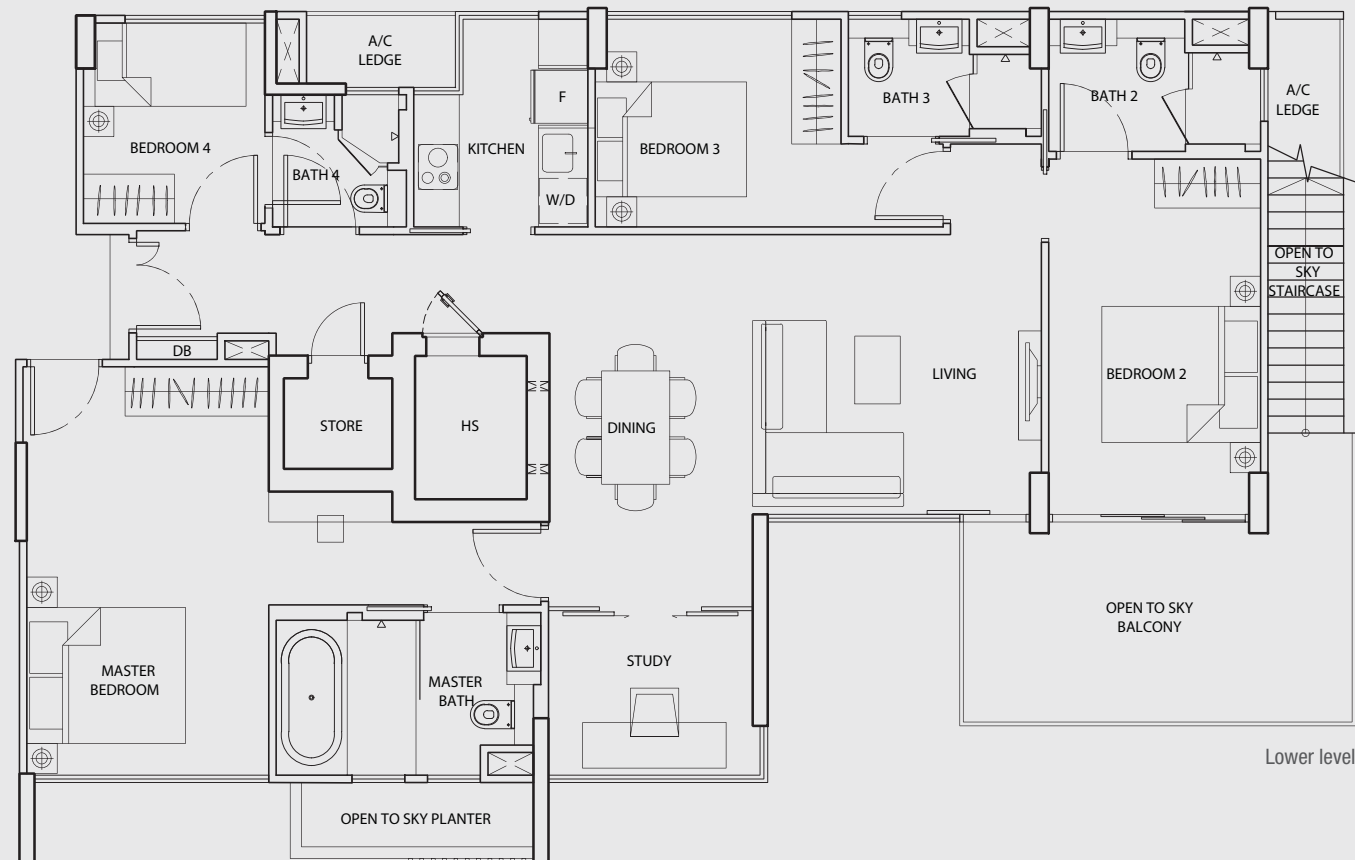
157 sq m / 1690 sq ft
(Upper Level)

161 sq m / 1733 sq ft
(Lower Level)

#20-02




Upper level



Lower level

Areas include A/C ledge, balcony, PES, roof terrace and void. Orientations and facings will differ depending on the unit you are purchasing. Please refer to the key plan. Plans are not drawn to scale and subject to change as may be required or approved by the relevant authorities. All floor areas are estimates and are subject to final survey.

 To allow accessibility of maintenance personnel when required.

